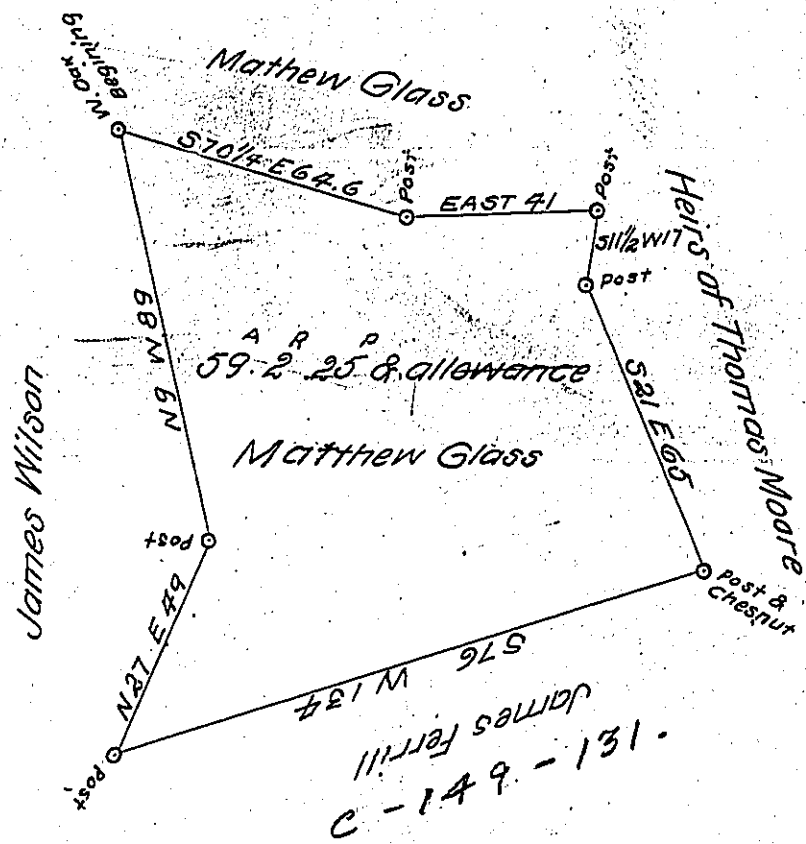


Harrover
BEAVER



The above is the Draught of a Survey made 3rd December A.D. 1829 for Matthew Glass on a certain parcel of Land Situated in Harrover Township in Beaver County in pursuance of a Warrant dated 13th November 1829 granted to him for Sixty acres of Land being improved adjoining Lands of said Matthew Glass on the North the Heirs of Thomas Moore on the East James Ferrill on the South and James Wilson on the West Situated in the place afore said The Survey contains Fifty nine acres two roads twenty five perches and allowance of six per cent for roads &c.

To Gabriel Hiester Esq^r
Surveyor General

Henry Davis D. S.

IN TESTIMONY that the above is a copy of the original remaining on file in the Department of Internal Affairs of Pennsylvania, made conformably to an Act of Assembly approved the 16th day of February, 1833, I have hereunto set my Hand and caused the Seal of said Department to be affixed at Harrisburg, this third day of January, 1905

Joseph R. Brown
Secretary of Internal Affairs.